

Metoprolol Tartrate Cas No. : 56392-17-7

If you have chest pain (angina) or have heart disease (e.g., coronary artery disease, ischemic heart disease, high blood pressure), do not stop using this drug without first consulting your doctor. Your condition may become worse when the drug is suddenly stopped. If your doctor decides you should no longer use this drug, you must gradually decrease your dose according to your doctor's instructions.

Active Pharmaceuticals Ingredients Manufacturers



Taj Pharma PDF

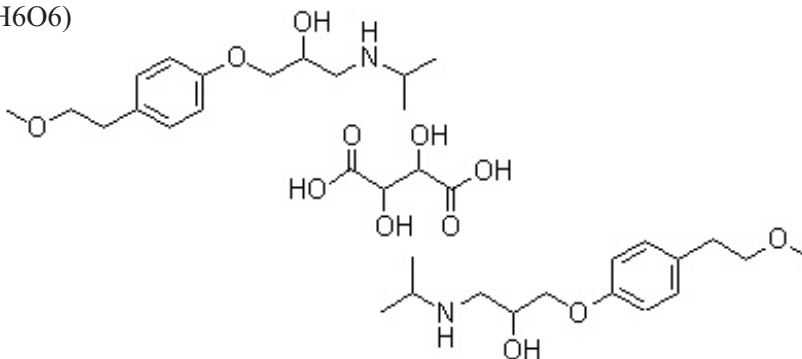
Taj Pharmaceuticals Ltd.**Metoprolol Tartrate****CAS No. : 56392-17-7****Chemical data**Molecular Formula $2(C_{15}H_{25}NO_3) \cdot (C_4H_6O_6)$

Molecular Weight 684.81

CAS Number 56392-17-7

Mol. mass 267.364 g/mol

SMILES eMolecules & PubChem

**Pharmacokinetic data**

Bioavailability 12%

Metabolism Hepatic

Half life 3-7 hours

Excretion Renal

DOSAGE

Take this medication by mouth, with or right after a meal, as directed by your doctor. Use this medication regularly in order to get the most benefit from it. To help you remember, use it at the same time(s) each day.

This drug is not effective if you use it only when chest pain or a migraine headache occurs. It is very important to take this medication regularly as prescribed to help prevent these conditions.

The dosage is based on your medical condition and response to therapy. It may take one or two weeks before the full benefit of this drug takes effect. It is important to continue taking this medication even if you feel well. Most people with high blood pressure do not feel sick.

* Metoprolol Tartrate is usually given as an injection at your doctor's office, hospital, or clinic. If you will be using Metoprolol Tartrate at home, a health care provider will teach you how to use it. Be sure you understand how to use Metoprolol Tartrate. Follow the procedures you are taught when you use a dose. Contact your health care provider if you have any questions.

* Do not use Metoprolol Tartrate if it contains particles, is cloudy or discolored, or if the vial is cracked or damaged.

* Keep this product, as well as syringes and needles, out of the reach of children and pets. Do not reuse needles, syringes, or other materials. Ask your health care provider how to dispose of these materials after use. Follow all local rules for disposal.

* If you miss a dose of Metoprolol Tartrate, use it as soon as possible. If it is almost time for your next dose, skip the missed dose and go back to your regular dosing schedule. Do not use 2 doses at once.

SIDE EFFECTS**Possible side effects of Metoprolol Tartrate :**

All medicines may cause side effects, but many people have no, or minor side effects. Check with your doctor if any of these most COMMON side effects persist or become bothersome:



Taj Pharmaceuticals Ltd.
Metoprolol Tartrate

CAS NO- 56392-17-7



Blurred vision; constipation; diarrhea; dizziness; dry mouth/eyes; gas; headache; heartburn; lightheadedness; mild drowsiness; muscle aches; nausea; nightmares; pain, redness, or swelling at the injection site; stomach pain; trouble sleeping; unusual tiredness or weakness; vomiting.

Severe allergic reactions (rash; hives; itching; difficulty breathing; tightness in the chest; swelling of the mouth, face, lips, or tongue); blue or unusually cold hands or feet; chest pain; fainting; hallucinations; mood or mental changes (eg, confusion, depression); pounding in the chest; severe dizziness or lightheadedness; shortness of breath; slow or irregular heartbeat; swelling of the arms, hands, and feet; vision changes; wheezing; yellowing of the skin or eyes.

Transient effects include dizziness, lightheadedness, drowsiness, tiredness, diarrhea, unusual dreams, ataxia, trouble sleeping, and vision problems. It may also reduce blood flow to the hands and feet, causing them to feel numb and cold; smoking may worsen this effect. Serious side effects that are not to be tolerated for any length of time include symptoms of a very slow heartbeat (less than 50 bpm) (e.g. persistent dizziness, fainting, unusual fatigue), bluish discoloration of the fingers and toes, numbness/tingling/swelling of the hands or feet, sexual dysfunction, erectile dysfunction (impotence), hair loss, mental/mood changes, trouble breathing, cough, and increased thirst. Other highly unlikely symptoms include easy bruising or bleeding, persistent sore throat or fever, yellowing skin or eyes, stomach pain, dark urine, and persistent nausea. Symptoms of an allergic reaction include: rash, itching, swelling, severe dizziness. Taking it with alcohol might cause mild body rashes and therefore is not recommended

PRECAUTIONS

Before taking metoprolol, tell your doctor or pharmacist if you are allergic to it; or to other beta-blockers (e.g., atenolol, propranolol); or if you have any other allergies.

This medication should not be used if you have certain medical conditions. Before using this medicine, consult your doctor or pharmacist if you have: certain types of irregular heartbeats (e.g., sinus bradycardia, second or third degree atrioventricular block, sick-sinus syndrome), cardiogenic shock, severe heart failure (overt or decompensated type), a certain type of tumor (untreated pheochromocytoma).

Before using this medication, tell your doctor or pharmacist your medical history, especially of: heart failure (treated, compensated type), breathing problems (e.g., asthma, chronic obstructive lung disease), diabetes, overactive thyroid disease (hyperthyroidism), liver disease, blood circulation problems (e.g., Raynaud's disease), skin conditions (e.g., psoriasis), mental/mood disorders (e.g., depression), certain muscle disease (myasthenia gravis).

Before having surgery, tell your doctor or dentist that you are taking this medication.

If you have diabetes, this medication may mask the fast/pounding heartbeat you would usually feel when your blood sugar level falls too low (hypoglycemia). Other symptoms of a low blood sugar level such as dizziness or sweating are unaffected by this drug.

This drug may make you dizzy or drowsy; use caution engaging in activities requiring alertness such as driving or using machinery. Limit alcoholic beverages.

To minimize dizziness and lightheadedness, get up slowly when rising from a seated or lying position.

This medication should be used only when clearly needed during pregnancy. Discuss the risks (e.g., low birth weight) and benefits with your doctor.

This drug passes into breast milk. While there have been no reports of harm to nursing infants, consult your doctor before breast-feeding.



DRUG DESCRIPTION

Metoprolol tartrate USP is a white, practically odorless, crystalline powder with a molecular weight of 684.82. It is very soluble in water; freely soluble in methylene chloride, in chloroform, and in alcohol; slightly soluble in acetone; and insoluble in ether.

Inactive Ingredients. Tablets contain cellulose compounds, colloidal silicon dioxide, D&C Red No. 30 aluminum lake (50-mg tablets), FD&C Blue No. 2 aluminum lake (100-mg tablets), lactose, magnesium stearate, polyethylene glycol, propylene glycol, povidone, sodium starch glycolate, talc, and titanium dioxide.

Do not suddenly stop taking Metoprolol Tartrate . Sharp chest pain, irregular heartbeat, and sometimes heart attack may occur if you suddenly stop Metoprolol Tartrate . The risk may be greater if you have certain types of heart disease. Your doctor should slowly lower your dose over several weeks if you need to stop taking it. This should be done even if you only take Metoprolol Tartrate for high blood pressure. Heart disease is common and you may not know you have it. Limit physical activity while you are lowering your dose. If new or worsened chest pain or other heart problems occur, contact your doctor right away. You may need to start taking Metoprolol Tartrate again.



Metoprolol Tartrate is used for:

Treating high blood pressure, alone or with other medicines; long-term treatment of chest pain; and reducing the risk of death because of heart problems in patients who have had a heart attack. It may also be used for other conditions as determined by your doctor.

Metoprolol Tartrate is a beta-adrenergic blocking agent (beta-blocker). It works by reducing the amount of work the heart has to do (reduces chest pain) and the amount of blood the heart pumps out (lowers high blood pressure). It is also used to stabilize the heart rhythm in conditions in which the heart is beating too fast or at an irregular rhythm.

Note /Government Notification: These chemicals are designated as those that are used in the manufacture of the controlled substances and are important to the manufacture of the substances. For any (Control Substance) products Import and Export *** subjected to your country government laws /control substance ACT.

Information: The information on this web page is provided to help you to work safely, but it is intended to be an overview of hazards, not a replacement for a full Material Safety Data Sheet (MSDS). MSDS forms can be downloaded from the web sites of many chemical suppliers. Also that the information on the PTCL Safety web site, where this page was hosted, has been copied onto many other sites, often without permission. If you have any doubts about the veracity of the information that you are viewing, or have any queries, please check the URL that your web browser displays for this page. If the URL begins "www.tajapi.com/www/Denatonium Benzoate.htm/" the page is maintained by the Safety Officer in Physical Chemistry at Oxford University. If not, this page is a copy made by some other person and we have no responsibility for it.

The Controlled Substances Act (CSA) was enacted into law by the Congress of the United States as Title II of the Comprehensive Drug Abuse Prevention and Control Act of 1970.[1] The CSA is the federal U.S. drug policy under which the manufacture, importation, possession, use and distribution of certain substances is regulated. The Act also served as the national implementing legislation for the Single Convention on Narcotic Drugs

This document plus the full buyer/ prescribing information, prepared for health professionals can be found at:

<http://www.tajapi.com>

or by contacting the sponsor, Taj Pharmaceuticals Limited., at:
91 022 30601000.

This leaflet was prepared by
Taj Pharmaceuticals Limited,
Mumbai (India).
MPSTJ278

Last revised: 29 August 2009