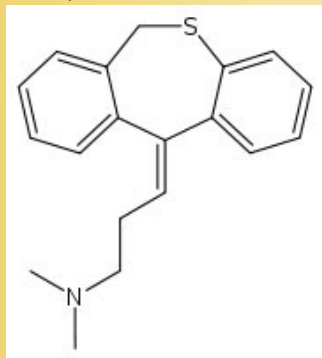


Dothiepin Hcl (Cas No 113-53-1)

Dothiepin Hcl



CAS number 113-53-1

ATC code N06AA16

PubChem 13473

Chemical data

Formula C₁₉H₂₁NS

Mol. mass 331.9 g/mol

Pharmacokinetic data

Bioavailability 30%

Metabolism Hepatic

Half life 20 hours

Excretion Renal

Therapeutic considerations

Pregnancy cat.