

## Rabeprazole Sodium (Cas No 117976-89-3)



Rabeprazole Sodium

CAS Number 117976-89-3

Systematic (IUPAC) name

2-([4-(3-methoxypropoxy)-3-methylpyridin-2-yl]methylsulfinyl)-1H-benzo[d]imidazole

Identifiers

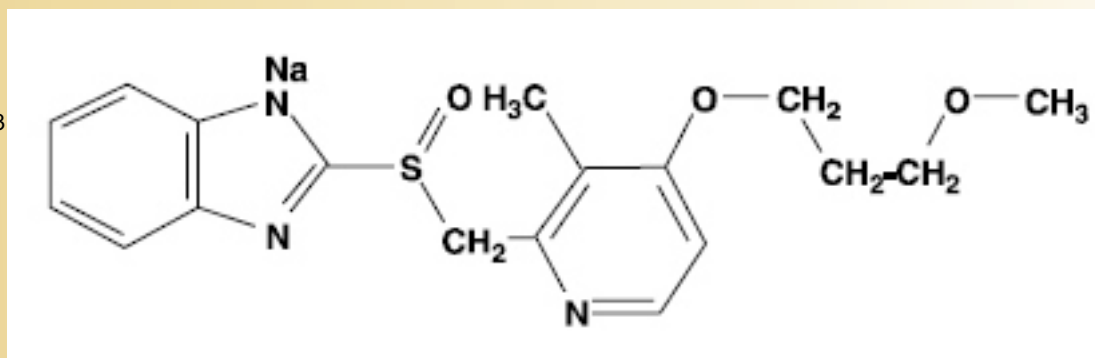
CAS number 117976-89-3

ATC code A02BC04

PubChem 5029

DrugBank APRD01212

ChemSpider 4853



Chemical data

Formula C<sub>18</sub>H<sub>21</sub>N<sub>3</sub>O<sub>3</sub>S Mol. mass 359.444 g/mol

SMILES eMolecules & PubChem

Pharmacokinetic data

Bioavailability 52%

Metabolism Hepatic

Half life 1 - 1.5 hours

Excretion Renal

Inactive ingredients of the 20 mg tablet are carnauba wax, crospovidone, diacetylated monoglycerides, ethylcellulose, hydroxypropyl cellulose, hypromellose phthalate, magnesium stearate, mannitol, propylene glycol, sodium hydroxide, sodium stearyl fumarate, talc, and titanium dioxide. Iron oxide yellow is the coloring agent for the tablet coating. Iron oxide red is the ink pigment.