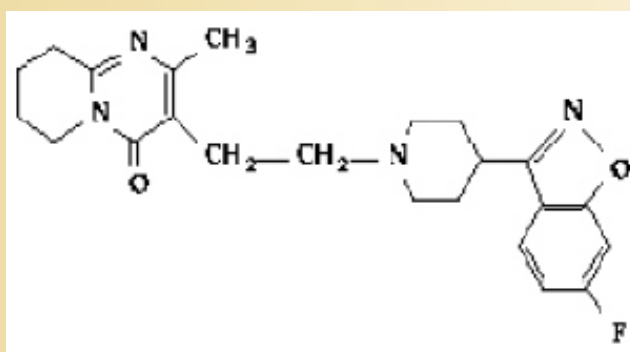


Risperidone (Cas No 106266-06-2)



Risperidone
CAS number 106266-06-2

Structure :



Systematic (IUPAC) name

4-[2-[4-(6-fluorobenzo[d]isoxazol-3-yl)-1-piperidinyl]ethyl]-3-methyl-

2,6-diazabicyclo[4.4.0]deca-1,3-dien-5-one

Identifiers

CAS number 106266-06-2

ATC code N05AX08

PubChem 5073

DrugBank APRD00187

Chemical data

Formula C₂₃H₂₇N₄O₂ Mol. mass 410.485 g/mol

SMILES eMolecules & PubChem

Pharmacokinetic data

Bioavailability 70% (oral)

Metabolism Hepatic (CYP2D6-mediated)

Half life 3–20 hours

Excretion Urinary

Therapeutic considerations

Pregnancy cat. C

Legal status Prescription only

Routes Oral and extended-release intramuscular injection

Risperidone is an atypical antipsychotic used to treat adolescent schizophrenia, the mixed and manic states associated with bipolar disorder, and irritability in children with autism.

Risperidone, a psychotropic agent belonging to the chemical class of benzisoxazole derivatives. The chemical designation is 3-[2-[4-(6-fluoro-1,2-benzisoxazol-3-yl)-1-piperidinyl]ethyl]-6,7,8,9-tetrahydro-2-methyl-4H-pyrido[1,2-a]pyrimidin-4-one. Its molecular formula is C₂₃H₂₇N₄O₂ and its molecular weight is 410.49. Risperidone is a white to slightly beige powder. It is practically insoluble in water, freely soluble in methylene chloride, and soluble in methanol and 0.1 N HCl.

Risperidone Tablets are available in 0.25 mg, 0.5 mg, 1 mg (white), 2 mg, 3 mg, and 4 mg (green) strengths. Risperidone tablets contain the following inactive ingredients: colloidal silicon dioxide, hypromellose, lactose, magnesium stearate, microcrystalline cellulose, propylene glycol, sodium lauryl sulfate, corn.

The 0.25 mg, 0.5 mg, 2 mg, 3 mg, and 4 mg tablets also contain talc and titanium dioxide. The 0.25 mg tablets contain yellow iron oxide; the 0.5 mg tablets contain red iron oxide.

Risperidone is also available as a 1 mg/mL oral solution. Risperidone Oral Solution contains the following inactive ingredients: tartaric acid, benzoic acid, sodium hydroxide, and purified water.