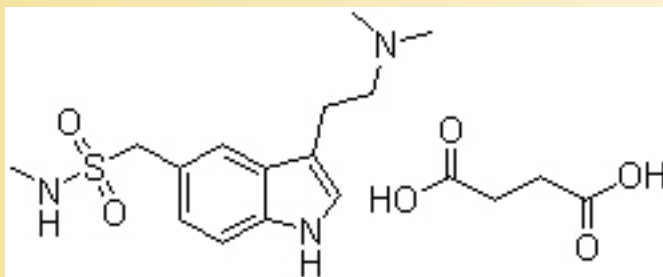


## Sumatriptan Succinate (Cas No 103628-48-4)



Molecular Structure



Sumatriptan Succinate

Molecular Formula C<sub>14</sub>H<sub>21</sub>N<sub>3</sub>O<sub>2</sub>S.C<sub>4</sub>H<sub>6</sub>O<sub>4</sub>

Molecular Weight 413.49

CAS Registry Number 103628-48-4

Pharmacokinetic data

Bioavailability 15% (oral)/ 96% (s.c)

Protein binding 14%-21%

Metabolism MAO

Half life 2.5 hours

Excretion 60% urine; 40% feces