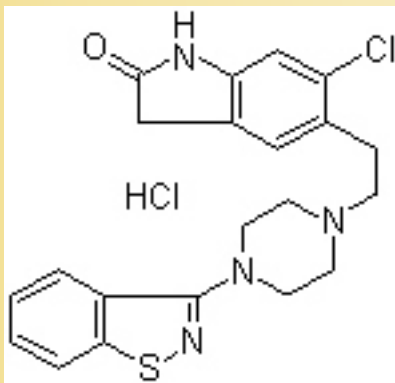


Ziprasidone Hcl (Cas No 138982-67-9)



Molecular Structure



Ziprasidone Hcl

Molecular Formula $C_{21}H_{21}ClN_4OS \cdot HCl$; $C_{21}H_{22}Cl_2N_4OS$

Molecular Weight 449.40

CAS Registry Number 138982-67-9

Chemical data

Formula $C_{21}H_{21}ClN_4OS$ Mol. mass 412.936

Pharmacokinetic data

Bioavailability 100% (intramuscular)

60% (orally)

Metabolism hepatic (aldehyde reductase)

Half life 2 - 5 hours

Excretion Urine and feces