

Betamethasone CAS No. : 378-44-9

Betamethasone is in a class of drugs called steroids. It reduces swelling and decreases the body's immune response. This medicine is used to treat many different conditions. Primarily, it is used to treat endocrine (hormonal) disorders when the body does not produce enough of its own steroids. It is also used to treat many immune and allergic disorders, such as arthritis, lupus, psoriasis, asthma, ulcerative colitis, and Crohn's disease.

Active Pharmaceuticals Ingredients Manufacturers

Taj Pharmaceuticals Ltd.
Betamethasone
CAS No. : 378-44-9
**Systematic (IUPAC) name**

(8S,9R,10S,11S,13S,14S,16S,17R)-9-fluoro- 11,17-dihydroxy-17-(2-hydroxyacetyl)-10,13,16-trimethyl-6,7,8,9,10,11,12,13,14,15,16,17-dodecahydro-3H-cyclopenta[a]phenanthren-3-one

Identifiers

CAS number 378-44-9

ATC code A07EA04 C05AA05 D07AC01 D07XC01 H02AB01 R01AD06 R03BA04 S01BA06

S01CB04 S02BA07 S03BA03

PubChem CID 9782

DrugBank APRD00513

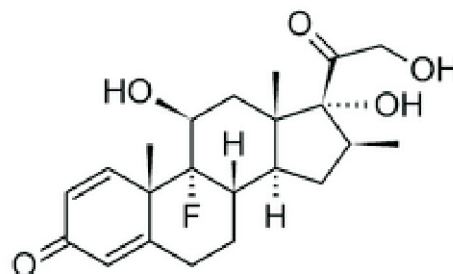
ChemSpider 9399

UNII 9842X06Q6M

Chemical dataFormula C₂₂H₂₉FO₅

Mol. mass 392.461

SMILES eMolecules & PubChem

**Betamethasone**

Betamethasone is in a class of drugs called steroids. It reduces swelling and decreases the body's immune response. This medicine is used to treat many different conditions. Primarily, it is used to treat endocrine (hormonal) disorders when the body does not produce enough of its own steroids. It is also used to treat many immune and allergic disorders, such as arthritis, lupus, psoriasis, asthma, ulcerative colitis, and Crohn's disease.

Product Information

The sections below will provide you with more specific information and guidelines related to betamethasone and its correct use. Please read them carefully.

**FDA Information**

Betamethasone was first approved by the FDA in 1961. A foam formulation of betamethasone valerate (Luxiq®) was approved on February 28th 1999 for corticosteroid-responsive scalp dermatoses. Please visit the official site of the FDA for further information.

Medication prescribed

Betamethasone is a kind of topical corticosteroids commonly prescribed for the treatment of skin and scalp disorders such as arthritis, asthma, ulcerative colitis, severe psoriasis, itching, redness, dryness, crusting, scaling, eczema, and inflammation.

Corticosteroids are anti-inflammatory medicines. Inflammation of the skin happens due to the irritation of the skin, and is caused by the release of various substances that are important in the immune system. These substances cause blood vessels to widen, resulting in the irritated area becoming red, swollen, itchy and painful. Betamethasone works by acting inside the skin cells to decrease the release of these inflammatory substances.

itchy and painful. Betamethasone works by acting inside the skin cells to decrease the release of these inflammatory substances.



Taj Pharmaceuticals Ltd. **EP6.0/USP30**
Betamethasone
Cas No. 378-44-9

What is the dosage and how should it be used?

Betamethasone comes in ointment, cream, lotion, and aerosol (spray) in various strengths for use on the skin. Take betamethasone exactly as directed by your doctor. Do not take more or less than is prescribed for you and if you do not understand these directions, ask your pharmacist, nurse, or doctor to explain them to you. Take each dose with a full glass of water, as well as with food or milk to lessen stomach upset. Be sure to measure the liquid with the dropper provided or with a special dose measuring spoon or cup. Ask your pharmacist for a dose-measuring spoon or cup if you do not have one.



Additionally, if you are taking one dose daily, take that dose before 9 a.m. if possible, to follow the body's natural cycle. If you take more than one dose daily, space the doses evenly throughout the day as directed by your doctor. Do not stop taking betamethasone suddenly if you have been taking it for a few weeks. You may need a gradual reduction in dosage before you stop taking this medication. It is strongly advised that you carry some type of medical identification that will let others know you are taking betamethasone in the case of an emergency.

What side effects can this medication cause?

If you experience any of the following serious side effects, stop taking betamethasone and seek emergency medical attention or contact your doctor immediately:

- an allergic reaction (difficulty breathing; closing of your throat; swelling of your lips, tongue, or face; or hives)
- increased blood pressure (severe headache or blurred vision)
- sudden weight gain (more than 5 pounds in a day or two)

Other, less serious side effects may be more likely to occur. Continue to take betamethasone and talk to your doctor if you experience:

- insomnia
- nausea, vomiting, or stomach upset
- fatigue or dizziness
- muscle weakness or joint pain
- problems with diabetes control
- increased hunger or thirst



This document plus the full buyer/ prescribing information, prepared for health professionals can be found at:

<http://www.tajapi.com>

or by contacting the sponsor, Taj Pharmaceuticals Limited., at:
91 022 30601000.

This leaflet was prepared by
Taj Pharmaceuticals Limited,
Mumbai (India).

MPSTJ278

Last revised: 29 August 2009