

Eszopiclone Cas No. : 138729-47-2

This medication is used to treat sleep problems (insomnia). It may help you fall asleep faster, sleep better during the night, and stay asleep longer. Eszopiclone belongs to a class of drugs known as hypnotics.

Active Pharmaceuticals Ingredients Manufacturers



Taj Pharma PDF

Taj Pharmaceuticals Ltd.

Eszopiclone

CAS No. : 138729-47-2

**Molecular Structure Escitalopram,**

4-Methyl-1-piperazinecarboxylic acid 6-(5-chloro-2-pyridinyl)-6,7-dihydro-7-oxo-5H-pyrrolo[3,4-b]pyrazin-5-yl ester,

CAS NO: 138729-47-2

Molecular Formula C₁₇H₁₇ClN₆O₃

Molecular Weight 388.81

CAS Registry Number 138729-47-2

4-Methyl-1-piperazinecarboxylic acid 6-(5-chloro-2-pyridinyl)-6,7-dihydro-7-oxo-5H-pyrrolo[3,4-b]pyrazin-5-yl ester

Systematic (IUPAC) name

(5S)-6-(5-Chloro-2-pyridinyl)-7-oxo-6,7-dihydro-5H-pyrrolo[3,4-b]pyrazin-5-yl 4-methyl-1-piperazinecarboxylate

Chemical data

Formula C₁₇H₁₇ClN₆O₃

Mol. mass 388.808 g/mol

SMILES eMolecules & PubChem

Pharmacokinetic data

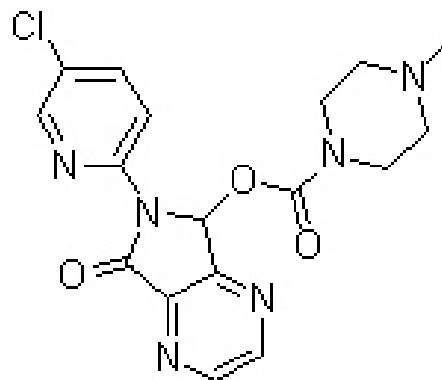
Bioavailability ?

Protein binding 52-59%

Metabolism Hepatic oxidation and demethylation (CYP3A4 and CYP2E1-mediated)

Half life 6 hours

Excretion Renal

**DOSAGE**

Eszopiclone comes as a tablet to take by mouth. It is usually taken once a day at bedtime or after unsuccessfully trying to fall asleep. Do not take eszopiclone with or shortly after a heavy, high-fat meal. Eszopiclone may not work well if it is taken with high fat foods. Follow the directions on your prescription label carefully, and ask your doctor or pharmacist to explain any part you do not understand. Take eszopiclone exactly as directed. Do not take more or less of it or take it more often than prescribed by your doctor. You will probably become very sleepy soon after you take eszopiclone and will remain sleepy for some time after you take the medication. You should only take eszopiclone immediately before you go to bed or after you have gone to bed and have been unable to fall asleep. Only take eszopiclone if you will be able to stay in bed for at least 8 hours after taking the medication. If you do not go to bed right after you take eszopiclone or if you get up too soon after taking eszopiclone, you may experience dizziness, lightheadedness, hallucinations (seeing things or hearing voices that do not exist), and problems with coordination and memory.

You should be sleeping well within 7 to 10 days after you start taking eszopiclone. Call you doctor if your sleep problems do not improve during this time, if they get worse at any time during your treatment, or if you notice any changes in your thoughts or behavior. Do not stop taking eszopiclone without talking to your doctor. Your doctor will probably decrease your dose gradually.



Taj Pharmaceuticals Ltd.
Eszopiclone

CAS NO- 138729-47-2

If you suddenly stop taking eszopiclone you may experience withdrawal symptoms such as anxiety, unusual dreams, stomach and muscle cramps, nausea, vomiting, sweating, shakiness, and rarely, seizures. After you stop taking eszopiclone, you may have more difficulty falling asleep and staying asleep than you did before you took the medication. These sleep problems are normal and usually get better without treatment after one or two nights. The usual dose to improve or maintain sleep in most adults is 2 or 3 mg. Persons over the age of 65 years usually are treated with 1 or 2 mg. Eszopiclone should be taken immediately before going to bed since the onset of sedation may occur as rapidly as 10 minutes. It should be taken only by individuals who intend to sleep for at least 8 hours since its effects may last up to six hours.

SIDE EFFECTS

The following side effects may occur from usage of eszopiclone

Common side effects can include:

- * unpleasant bitter or metallic taste
- * headaches
- * chest pain
- * cold-like symptoms
- * pain
- * dry mouth
- * daytime drowsiness
- * lightheadedness
- * dizziness
- * upset stomach
- * decreased sexual desire
- * painful menstruation (periods)
- * heartburn

Less common side effects can include:

- * rashes
- * itching
- * incoordination
- * swelling of the hands, feet, ankles, or lower legs
- * painful or frequent urination
- * back pain

neuropsychiatric adverse effects reported include

- * more outgoing behavior
- * aggressive behavior
- * confusion
- * agitation
- * auditory and visual hallucinations
- * worsening of depression
- * suicidal thoughts
- * depersonalisation
- * amnesia

If a person does not sleep immediately after taking eszopiclone or if they get up shortly after taking the medication they may experience dizziness, lightheadedness, hallucinations (seeing things or hearing voices that are not there), as well as problems with coordination and memory.





PRECAUTIONS

This medicine works very quickly. You should take eszopiclone immediately before going to bed.

If you think you need to take eszopiclone for more than 2 weeks, be sure to discuss it with your doctor. Insomnia that lasts longer than this may be a sign of another medical problem.

This medicine will add to the effects of alcohol and other CNS depressants (medicines that cause drowsiness). Some examples of CNS depressants are antihistamines or medicine for hay fever, other allergies, or colds; sedatives, tranquilizers, or sleeping medicine; prescription pain medicine or narcotics; barbiturates; medicine for seizures; muscle relaxants; or anesthetics, including some dental anesthetics. Check with your doctor before taking any of the above while you are using this medicine.

This medicine may cause some people, especially older persons, to become drowsy, dizzy, lightheaded, clumsy or unsteady, or less alert than they are normally. Even though eszopiclone is taken at bedtime, it may cause some people to feel drowsy or less alert on arising. Make sure you know how you react to eszopiclone before you drive, use machines, or do anything else that could be dangerous if you are dizzy, or are not alert or able to see well.

DRUG DESCRIPTION

Eszopiclone is a sedative, also called a hypnotic. It affects chemicals in your brain that may become unbalanced and cause sleep problems. Eszopiclone is used to treat insomnia. This medication causes relaxation to help you fall asleep and stay asleep.

Eszopiclone belongs to the group of medicines called central nervous system (CNS) depressants (medicines that make you drowsy or less alert). This medicine is used to treat insomnia (trouble in sleeping). Eszopiclone helps you get to sleep faster and sleep through the night. In general, when sleep medicines are used every night for a long time, they may lose their effectiveness. In most cases, sleep medicines should be used only for short periods of time, such as 7 to 10 days, and generally for no longer than 2 weeks. This medicine is available only with your doctor's prescription.

Note /Government Notification: These chemicals are designated as those that are used in the manufacture of the controlled substances and are important to the manufacture of the substances. For any (Control Substance) products Import and Export *** subjected to your country government laws /control substance ACT.

Information: The information on this web page is provided to help you to work safely, but it is intended to be an overview of hazards, not a replacement for a full Material Safety Data Sheet (MSDS). MSDS forms can be downloaded from the web sites of many chemical suppliers. Also that the information on the PTCL Safety web site, where this page was hosted, has been copied onto many other sites, often without permission. If you have any doubts about the veracity of the information that you are viewing, or have any queries, please check the URL that your web browser displays for this page. If the URL begins "www.tajapi.com/www/Denatonium Benzoate.htm/" the page is maintained by the Safety Officer in Physical Chemistry at Oxford University. If not, this page is a copy made by some other person and we have no responsibility for it.

The Controlled Substances Act (CSA) was enacted into law by the Congress of the United States as Title II of the Comprehensive Drug Abuse Prevention and Control Act of 1970.[1] The CSA is the federal U.S. drug policy under which the manufacture, importation, possession, use and distribution of certain substances is regulated. The Act also served as the national implementing legislation for the Single Convention on Narcotic Drugs

This document plus the full buyer/ prescribing information, prepared for health professionals can be found at:

<http://www.tajapi.com>

or by contacting the sponsor, Taj Pharmaceuticals Limited., at:
91 022 30601000.

This leaflet was prepared by
Taj Pharmaceuticals Limited,
Mumbai (India).

MPSTJ278

Last revised: 29 August 2009