

**Omeprazole Cas No. : 73590-58-6**

Omeprazole works by blocking acid production in the stomach. This medication is known as a proton pump inhibitor (PPI). It is used to treat acid-related stomach and throat (esophagus) problems. Decreasing excess stomach acid can help relieve symptoms such as heartburn, difficulty swallowing, persistent cough, and trouble sleeping.

Active Pharmaceuticals Ingredients Manufacturers



Taj Pharma PDF

**Taj Pharmaceuticals Ltd.****Omeprazole****CAS No. : 73590-58-6****Systematic (IUPAC) name**

6-methoxy-2-((4-methoxy-3,5-dimethylpyridin-2-yl) methylsulfinyl)-1H-benzo[d]imidazole

**Identifiers**

ATC code A02BC01

PubChem 4594

DrugBank APRD00446

ChemSpider 4433

**Chemical data**Formula C<sub>17</sub>H<sub>19</sub>N<sub>3</sub>O<sub>3</sub>S

Mol. mass 345.4 g/mol

SMILES eMolecules &amp; PubChem

**Pharmacokinetic data**

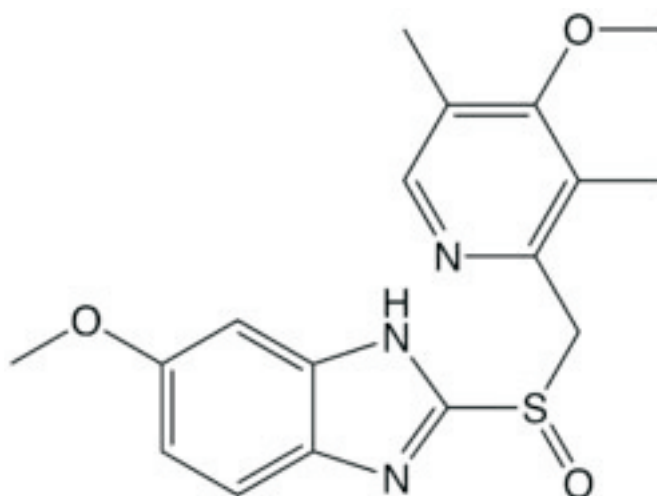
Bioavailability 35–60%

Metabolism Hepatic (CYP2C19, CYP3A4)

Half life 1 - 1.2 hours

Excretion 80% Renal

20% Faecal

**USES**

Omeprazole works by blocking acid production in the stomach. This medication is known as a proton pump inhibitor (PPI). It is used to treat acid-related stomach and throat (esophagus) problems. Decreasing excess stomach acid can help relieve symptoms such as heartburn, difficulty swallowing, persistent cough, and trouble sleeping. It can also prevent serious acid damage to your digestive system (e.g., ulcers, cancer of the esophagus).

This medication may be used in combination with antibiotics to treat certain types of ulcers caused by bacterial infection.

**HOW TO USE**

Take this medication by mouth, usually once daily, 15 to 30 minutes before a meal; or as directed by your doctor. Do not crush, break or chew the medication. Swallow the medication whole. If you have difficulty swallowing this medication whole, the capsule may be opened and the contents sprinkled onto cool applesauce and taken as directed. Do not chew the food/medication mixture or prepare a supply in advance; this may destroy the drug and/or increase side effects. Drink a glass of cool water after each dose to ensure complete swallowing of the medication.

Antacids may be taken along with this medication, if needed.

The dosage and length of treatment is based on your medical condition and response to therapy.

Use this medication regularly in order to get the most benefit from it. Remember to use it at the same time each day. Continue to take this medication for the prescribed length of treatment even if you are feeling better.



Taj Pharmaceuticals Ltd.  
**O m e p r a z o l e**

CAS No 73590-58-6



### **SIDE EFFECTS**

Constipation, cough, dizziness or back pain may occur. If any of these effects persist or worsen, notify your doctor or pharmacist promptly.

Remember that your doctor has prescribed this medication because he or she has judged that the benefit to you is greater than the risk of side effects. Many people using this medication do not have serious side effects.

Tell your doctor immediately if any of these highly unlikely but very serious side effects occur: signs of vitamin B-12 deficiency with long-term (over 3 years) treatment (e.g., unusual weakness, sore tongue, numbness or tingling of the hands/feet).

A serious allergic reaction to this drug is unlikely, but seek immediate medical attention if it occurs. Symptoms of a serious allergic reaction include: rash, itching, swelling, severe dizziness, trouble breathing.

### **PRECAUTIONS**

Before taking omeprazole, tell your doctor or pharmacist if you are allergic to it; or to similar drugs (e.g., lansoprazole, pantoprazole); or if you have any other allergies.

Before using this medication, tell your doctor or pharmacist your medical history, especially of: liver disease, other stomach problems (e.g., tumors).

Some symptoms may actually be signs of a more serious condition. Tell your doctor immediately if you have: heartburn combined with lightheadedness/sweating/dizziness, chest pain or shoulder/jaw pain (especially with trouble breathing), pain spreading to arms/neck/shoulders, unexplained weight loss.

This drug may make you dizzy; use caution engaging in activities requiring alertness such as driving or using machinery.

Limit alcoholic beverages.

This medication should be used only when clearly needed during pregnancy. Discuss the risks and benefits with your doctor.

### **MISSED DOSE**

If you miss a dose, use it as soon as you remember. If it is near the time of the next dose, skip the missed dose and resume your usual dosing schedule. Do not double the dose to catch up.

### **STORAGE**

Store at room temperature between 59-86 degrees F (15-30 degrees C) away from light and moisture. Do not store in the bathroom. Keep all medicines away from children and pets.

### **DOSAGE**

Omeprazole is not for immediate relief of heartburn symptoms.

Take omeprazole exactly as directed on the label, or as it was prescribed for you. Do not take the medication in larger amounts, or take it for longer than recommended by your doctor. Follow the directions on the medicine label or on your prescription label.



Take each dose of omeprazole with a full glass (8 ounces) of water.

Omeprazole is usually taken before eating. Follow your doctor's instructions.

Do not crush, break, or open a delayed-release capsule. Swallow the pill whole. It is specially made to release medicine slowly in the body. Breaking or opening the pill would cause too much of the drug to be released at one time.

You may open the delayed-release capsule and sprinkle the medicine into a spoonful of applesauce to make swallowing easier. Swallow this mixture right away without chewing. Do not save the mixture for later use. Discard the empty capsule.

omeprazole (over-the-counter) should be taken only once every 24 hours for 14 days. Take the medicine in the morning before you eat breakfast. It may take up to 4 days for full effect. Do not take more than one tablet every 24 hours.

Allow at least 4 months to pass before you start another 14-day treatment with omeprazole. Call your doctor if you have additional symptoms and need treatment before the 4 months has passed.

Do not crush, chew, or break a omeprazole tablet. Swallow the pill whole. Take omeprazole for the entire length of time prescribed by your doctor. Your symptoms may get better before your treatment is completed. Call your doctor if your symptoms do not improve or if they get worse while you are taking this medicine. Store omeprazole at room temperature away from moisture and heat.



**Note /Government Notification:** These chemicals are designated as those that are used in the manufacture of the controlled substances and are important to the manufacture of the substances. For any (Control Substance) products Import and Export \*\*\* subjected to your country government laws /control substance ACT.

Information: The information on this web page is provided to help you to work safely, but it is intended to be an overview of hazards, not a replacement for a full Material Safety Data Sheet (MSDS). MSDS forms can be downloaded from the web sites of many chemical suppliers. Also that the information on the PTCL Safety web site, where this page was hosted, has been copied onto many other sites, often without permission. If you have any doubts about the veracity of the information that you are viewing, or have any queries, please check the URL that your web browser displays for this page. If the URL begins "www.tajapi.com/www/Denatonium Benzoate.htm/" the page is maintained by the Safety Officer in Physical Chemistry at Oxford University. If not, this page is a copy made by some other person and we have no responsibility for it.

The Controlled Substances Act (CSA) was enacted into law by the Congress of the United States as Title II of the Comprehensive Drug Abuse Prevention and Control Act of 1970.[1] The CSA is the federal U.S. drug policy under which the manufacture, importation, possession, use and distribution of certain substances is regulated. The Act also served as the national implementing legislation for the Single Convention on Narcotic Drugs

This document plus the full buyer/ prescribing information, prepared for health professionals can be found at:

<http://www.tajapi.com>

or by contacting the sponsor, Taj Pharmaceuticals Limited., at:  
91 022 30601000.

This leaflet was prepared by  
Taj Pharmaceuticals Limited,  
Mumbai (India).

MPSTJ278

Last revised: 29 August 2009