

**Tamsulosin HCl Cas No. : 106463-17-6**

This medication is used to treat the symptoms of a prostate gland condition called BPH. Tamsulosin is an alpha-blocker that works by relaxing the muscles in the bladder neck and prostate. Relaxing these muscles leads to relief of symptoms of BPH such as the feeling of needing to urinate frequently or urgently, weak stream, difficulty in beginning the flow of urine, and the need to urinate during the middle of the night.

Active Pharmaceuticals Ingredients Manufacturers



Taj Pharma PDF

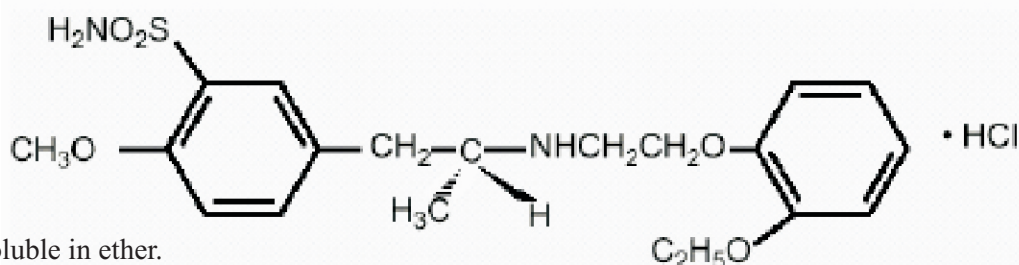
**Taj Pharmaceuticals Ltd.****Tamsulosin HCl****CAS No. : 106463-17-6****Synonyms:**

Tamsulosin hydrochloride is an antagonist of alpha 1A adrenoceptors in the prostate.

Tamsulosin hydrochloride is (-)-(R)-5-[2-[[2-(o-Ethoxyphenoxy) ethyl]amino]propyl]-2-methoxybenzenesulfonamide, monohydrochloride.

Tamsulosin hydrochloride is a white crystalline powder that melts with decomposition at approximately 230°C.

It is sparingly soluble in water and methanol, slightly soluble in glacial acetic acid and ethanol, and practically insoluble in ether.



The empirical formula of tamsulosin hydrochloride is  $C_{20}H_{28}N_2O_5S \cdot HCl$ .

The molecular weight of tamsulosin hydrochloride is 444.98.

Tamsulosin is approved to treat male urinary symptoms due to BPH, also called an enlarged prostate.

Only your doctor can tell if you have BPH, not a more serious condition like prostate cancer.

Avoid driving or hazardous tasks for 12 hours after your first dose or increase in dose, as a sudden drop in blood pressure may occur, rarely resulting in fainting..

**USES**

This medication is used to treat the symptoms of a prostate gland condition called BPH. Tamsulosin is an alpha-blocker that works by relaxing the muscles in the bladder neck and prostate. Relaxing these muscles leads to relief of symptoms of BPH such as the feeling of needing to urinate frequently or urgently, weak stream, difficulty in beginning the flow of urine, and the need to urinate during the middle of the night.

**HOW TO USE:** Take this medication by mouth, usually once daily. Take the first dose at bedtime to minimize the chances of getting dizzy or fainting. After the first dose, take your regularly scheduled dose 30 minutes after the same meal each day, Swallow this medication whole.

Do not crush, chew, or open the capsules.

The dosage is based on your medical condition and response to therapy.



**Taj Pharmaceuticals Ltd.**  
**Tamsulosin Hcl**

CAS No 106463-17-6



**SIDE EFFECTS**

Dizziness, unusual weakness, drowsiness, trouble sleeping, blurred vision, runny nose, or problems ejaculating may occur. If any of these effects persist or worsen, tell your doctor

A very serious allergic reaction to this drug is rare. However, seek immediate medical attention if you notice any symptoms of a serious allergic reaction, including: rash, itching, swelling, severe dizziness, trouble breathing.

This is not a complete list of possible side effects. If you notice other effects not listed above, contact your doctor

**PRECAUTIONS**

Before taking tamsulosin, tell your doctor or pharmacist if you are allergic to it; or to other alpha-blockers such as alfuzosin, doxazosin or terazosin; or to sulfa drugs; or if you have any other allergies.

Before using this medication, tell your doctor or pharmacist your medical history, especially of: prostate cancer, blood pressure problems.

To avoid dizziness or fainting, get up slowly from a lying or seated position, especially when you first start taking this drug or if your doctor changes your dosing. Also, when you first start taking this drug, avoid situations where you may be injured if you faint.

This drug may make you dizzy or drowsy or cause blurred vision.

Use caution while driving, using machinery, or doing any activity that requires alertness or clear vision. Limit alcoholic beverages.

**MISSED DOSE**

If you miss a dose, take it as soon as you remember. If it is near the time of the next dose, skip the missed dose and resume your usual dosing schedule. Do not double the dose to catch up.

**STORAGE**

Store at room temperature at 77 degrees F (25 degrees C) away from light and moisture. Brief storage between 59-86 degrees F (15-30 degrees C) is permitted.

Do not store in the bathroom. Keep all medicines away from children.

**DOSAGE**

Take this medication by mouth, generally once daily. Take the first dose at bedtime to minimize the chances of getting dizzy or fainting.





After the first dose, take your regularly scheduled dose 30 minutes after the same meal each day; or take exactly as directed by your doctor.

Do not crush, chew or open the capsule. Swallow it whole. The dosage is based on your medical condition and response to therapy.

Use this medication regularly in order to get the most benefit from it.

Remember to use it at the same time each day.

If you have not taken this drug for several days, contact your doctor to re-establish your dosing schedule.

To minimize side effects, you will be restarted at the lowest dose.

The dosage will then gradually be increased. It may take up to 4 weeks to notice an improvement in symptoms.

## INTERACTION

This drug should not be used with the following medications because very serious interactions may occur: sildenafil (dose higher than 25mg), vardenafil.

If you are currently using any of these medications, tell your doctor or pharmacist before starting tamsulosin.

Before using this medication, tell your doctor of all prescription and nonprescription/herbal products you may use, especially of: other alpha-blocker drugs (e.g., doxazosin, prazosin), high blood pressure drugs, "blood thinners" (e.g., warfarin), cimetidine, sildenafil (dose 25mg or less), tadalafil.

Tell your doctor if you also take drugs that cause drowsiness such as: anti-anxiety drugs (e.g., diazepam), antihistamines that cause drowsiness (e.g., diphenhydramine), anti-seizure drugs (e.g., carbamazepine), medicine for sleep (e.g., sedatives), muscle relaxants, narcotic pain relievers (e.g., codeine), psychiatric medicines (e.g., phenothiazines such as chlorpromazine, or tricyclics such as amitriptyline), tranquilizers.

Check the labels on all your medicines (e.g., cough-and-cold products) because they may contain ingredients that cause drowsiness.

**Note /Government Notification:** These chemicals are designated as those that are used in the manufacture of the controlled substances and are important to the manufacture of the substances. For any (Control Substance) products Import and Export \*\*\* subjected to your country government laws /control substance ACT.

Information: The information on this web page is provided to help you to work safely, but it is intended to be an overview of hazards, not a replacement for a full Material Safety Data Sheet (MSDS). MSDS forms can be downloaded from the web sites of many chemical suppliers. Also that the information on the PTCL Safety web site, where this page was hosted, has been copied onto many other sites, often without permission. If you have any doubts about the veracity of the information that you are viewing, or have any queries, please check the URL that your web browser displays for this page. If the URL begins "www.tajapi.com/www/Denatonium Benzoate.htm/" the page is maintained by the Safety Officer in Physical Chemistry at Oxford University. If not, this page is a copy made by some other person and we have no responsibility for it.

The Controlled Substances Act (CSA) was enacted into law by the Congress of the United States as Title II of the Comprehensive Drug Abuse Prevention and Control Act of 1970.[1] The CSA is the federal U.S. drug policy under which the manufacture, importation, possession, use and distribution of certain substances is regulated. The Act also served as the national implementing legislation for the Single Convention on Narcotic Drugs

This document plus the full buyer/ prescribing information, prepared for health professionals can be found at:

<http://www.tajapi.com>

or by contacting the sponsor, Taj Pharmaceuticals Limited., at:  
91 022 30601000.

This leaflet was prepared by  
Taj Pharmaceuticals Limited,  
Mumbai (India).  
MPSTJ278

Last revised: 29 August 2009