

**Sildenafil Citrate Cas No. : 139755-83-2**

Sildenafil is used to treat male sexual function problems (impotence or erectile dysfunction) by blocking a certain enzyme (phosphodiesterase-PDE5) in the body. In combination with sexual stimulation, sildenafil works by helping the blood flow into the penis to achieve and maintain an erection.

Active Pharmaceuticals Ingredients Manufacturers



Taj Pharma PDF

**Taj Pharmaceuticals Ltd.****Sildenafil Citrate****CAS No. : 139755-83-2****Identifiers**

CAS number 139755-83-2

Chemical data

Formula C<sub>22</sub>H<sub>30</sub>N<sub>6</sub>O<sub>4</sub>S

Mol. mass base: 474.6 g/mol

SMILES eMolecules &amp; PubChem

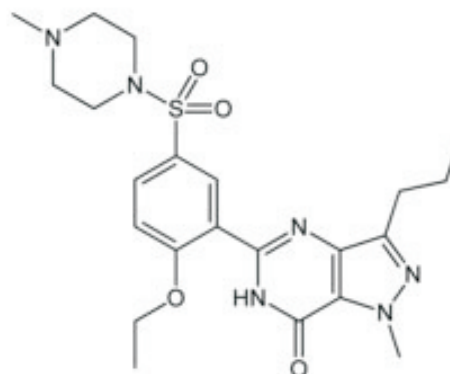
**Pharmacokinetic data**

Bioavailability 40%

Metabolism Hepatic (mostly CYP3A4, also CYP2C9)

Half life 3 to 4 hours

Excretion Fecal (80%) and renal (around 13%)



Sildenafil citrate is designated chemically as 1-[[3-(6,7-dihydro-1-methyl-7-oxo-3-propyl-1H-pyrazolo[4,3-d]pyrimidin-5-yl)-4-ethoxyphenyl]sulfonyl]-4-methylpiperazine citrate. Sildenafil citrate is a white to off-white crystalline powder with a solubility of 3.5 mg/mL in water and a molecular weight of 666.7. VIAGRA (sildenafil citrate) is formulated as blue, film-coated rounded-diamond-shaped tablets equivalent to 25 mg, 50 mg and 100 mg of sildenafil for oral administration. In addition to the active ingredient, sildenafil citrate, each tablet contains the following inactive ingredients: microcrystalline cellulose, anhydrous dibasic calcium phosphate, croscarmellose sodium, magnesium stearate, hypromellose, titanium dioxide, lactose, triacetin.

**USES**

Sildenafil is used to treat male sexual function problems (impotence or erectile dysfunction) by blocking a certain enzyme (phosphodiesterase-PDE5) in the body. In combination with sexual stimulation, sildenafil works by helping the blood flow into the penis to achieve and maintain an erection.

This drug is not indicated for use in women.

Use of this drug does not protect against sexually transmitted diseases (e.g., HIV, hepatitis B, gonorrhea, syphilis). Practice "safe sex" such as using latex condoms. Consult your doctor or pharmacist for more details.

**HOW TO USE**

Read the Patient Information Leaflet provided by your pharmacist before you start taking sildenafil and each time you get a refill. If you have any questions, consult your doctor or pharmacist.

This drug is taken by mouth as needed, at least 30 minutes, but no more than 4 hours, before sexual activity (1 hour before is the most effective). Do not take more often than once daily, and take as directed.

A high fat meal may delay the time of onset of this drug.

**DOSAGE**

Read the Patient Information Leaflet provided by your pharmacist before you start taking sildenafil and each time you get a refill. If you have any questions, consult your doctor or pharmacist.



**Taj Pharmaceuticals Ltd.**  
**Sildenafil Citrate**

CAS No. 139755-83-2



This drug is taken by mouth as needed, at least 30 minutes, but no more than 4 hours, before sexual activity (1 hour before is the most effective). Do not take more often than once daily, and take as directed.

A high fat meal may delay the time of onset of this drug.

Avoid eating grapefruit or drinking grapefruit juice while you are being treated with this medication unless your doctor instructs you otherwise.

The dosage is based on your medical condition, response to therapy, and other medications you may be taking (see also Drug Interactions section). Consult your doctor for more details.

### **SIDE EFFECTS**

Headache, flushing, stomach upset, heartburn, nasal stuffiness, diarrhea, dizziness, or lightheadedness may occur. Vision changes such as increased sensitivity to light, blurred vision, or impaired blue/green color discrimination may also occur. If any of these effects persist or worsen, notify your doctor or pharmacist promptly.

Remember that your doctor has prescribed this medication because he or she has judged that the benefit to you is greater than the risk of side effects. Many people using this medication do not have serious side effects.

Rarely, a sudden loss of eyesight in one or both eyes (NAION) may occur. This may or may not be due to sildenafil.

If this serious problem occurs, seek immediate medical attention. You have a slightly greater chance of developing this serious eye problem if you have heart disease, diabetes, high cholesterol, certain eye problems ("crowded disk"), high blood pressure, are over 50 years of age, or if you smoke.

Sexual activity may put extra strain on your heart, especially if you have heart problems. If you have heart problems and experience any of these serious side effects while having sex, stop and seek immediate medical attention: severe dizziness, fainting, chest pain, nausea.

For males, in the very unlikely event you have a painful or prolonged erection lasting 4 or more hours, stop using this drug and seek immediate medical attention, or permanent problems could occur.

Rarely, sildenafil may cause sudden hearing problems, or ringing in the ears. Seek immediate medical attention if these effects occur.

A serious allergic reaction to this drug is unlikely, but seek immediate medical attention if it occurs. Symptoms of a serious allergic reaction include: rash, itching, unusual swelling, severe dizziness, trouble breathing.

### **PRECAUTIONS**

Before using this medication, tell your doctor or pharmacist your medical history, especially of: penis conditions (e.g., angulation, fibrosis/scarring, Peyronie's disease), history of painful/prolonged erection (priapism), sickle cell anemia, blood system cancers (e.g., leukemia or myeloma), eye problems (e.g., retina diseases like retinitis pigmentosa), kidney disease, liver disease, bleeding disorders, active stomach ulcers, heart problems (e.g., recent heart attack or serious arrhythmia within past 6 months, heart failure, coronary artery disease with unstable angina, aortic stenosis, idiopathic hypertrophic subaortic stenosis), recent stroke within past 6 months, very high or low blood pressure.

This drug may make you dizzy or cause vision changes; use caution engaging in activities requiring alertness such as driving or using machinery. Limit alcoholic beverages.



To minimize dizziness and lightheadedness, get up slowly when rising from a seated or lying position.

Do not take this medication with any other product that contains sildenafil or other similar medications for erection problems (e.g., tadalafil, vardenafil).

Caution is advised when using this drug in the elderly because they may be more sensitive to the side effects of the drug.

This drug is not indicated for use in women or children.



Note /Government Notification: These chemicals are designated as those that are used in the manufacture of the controlled substances and are important to the manufacture of the substances. For any (Control Substance) products Import and Export \*\*\* subjected to your country government laws /control substance ACT.

Information: The information on this web page is provided to help you to work safely, but it is intended to be an overview of hazards, not a replacement for a full Material Safety Data Sheet (MSDS). MSDS forms can be downloaded from the web sites of many chemical suppliers. Also that the information on the PTCL Safety web site, where this page was hosted, has been copied onto many other sites, often without permission. If you have any doubts about the veracity of the information that you are viewing, or have any queries, please check the URL that your web browser displays for this page. If the URL begins "www.tajapi.com/www/Denatonium Benzoate.htm/" the page is maintained by the Safety Officer in Physical Chemistry at Oxford University. If not, this page is a copy made by some other person and we have no responsibility for it.

The Controlled Substances Act (CSA) was enacted into law by the Congress of the United States as Title II of the Comprehensive Drug Abuse Prevention and Control Act of 1970.[1] The CSA is the federal U.S. drug policy under which the manufacture, importation, possession, use and distribution of certain substances is regulated. The Act also served as the national implementing legislation for the Single Convention on Narcotic Drugs

This document plus the full buyer/ prescribing information, prepared for health professionals can be found at:

<http://www.tajapi.com>

or by contacting the sponsor, Taj Pharmaceuticals Limited., at:  
91 022 30601000.

This leaflet was prepared by  
Taj Pharmaceuticals Limited,  
Mumbai (India).  
MPSTJ278

Last revised: 29 August 2009